

Promenade[®]

Sliding Patio Door Collection
—Contemporary, Classic, French—



*Masterfully crafted for exceptional beauty, durability
and energy efficiency for your home.*

Alside[®]

Promenade® Sliding Patio Door Collection



Selecting the right patio door for your home is easy when you have three superb styles to choose from: Contemporary, Classic and French. Each Promenade door is beautifully detailed to achieve a distinctive look while providing a powerful shield against inclement weather and energy loss.† Promenade also incorporates Alside's 75 years of manufacturing excellence, further assurance of lasting quality and value.

A Fusion of Beauty and Strength

A welcoming entrance that's weathertight is the hallmark of every Promenade Sliding Patio Door.

Featuring a premium vinyl construction, integrated insulating components and high-performance glass, Promenade delivers all the "must-haves" in an outstanding patio door.

The heavy-duty mainframe and sash, multi-chambered extrusions and steel-reinforced interlocking meeting rails ensure superior structural integrity and durability, as well as protection from inclement weather. Dual internal/external weatherstripping, compression bulb seal and a 1" thick (nominal) insulated glass unit with a warm-edge spacer system also contribute to thermal efficiency.

Built for everyday wear and tear, the sliding panel glides smoothly and quietly on a precision-engineered tandem roller system. The handsome yet rugged aluminum screen also features four adjustable rollers for easy and reliable operation year after year.

High-performance glass guards against energy loss.

Many people think of glass as being fragile, yet it's one of the primary components in the thermal efficiency of your patio door. Upgrading your door with a ClimaTech[®] insulated glass package will further increase energy conservation. ClimaTech combines multi-layered, low-emissivity (Low-E) glass, argon gas^{††} and the Intercept[®] Warm-Edge Spacer System for improved energy efficiency compared to a standard clear glass unit.



In winter months, Low-E insulating glass reduces heat loss by reflecting warmth back into your home.



In summer months, Low-E insulating glass helps block unwanted solar heat penetration to conserve air-conditioning use.

Insulating warm-edge spacer system for thermal protection.



The spacer system not only stabilizes the panes of glass in your door, it also helps prevent the transfer of heat and cold.

The Intercept Warm-Edge Spacer features a unique, one-piece metal alloy, U-channel design that reduces heat loss through the patio door. It's stronger and better at retaining insulating gas than many conventional spacers.

Compare the performance data!

ClimaTech insulated glass packages have proven to be far more effective than ordinary clear glass units. A simple way to compare one patio door to the next is to check out the performance data on the door's glass label. The lower the U-Factor, the less energy you'll need to heat your home. The lower the Solar Heat Gain Coefficient (SHGC), the more you'll conserve on air-conditioning.

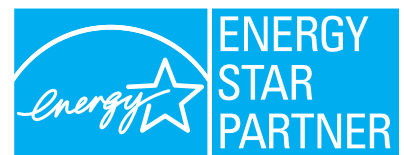


Green Inspiration

Exceptionally strong and weathertight, Aside Patio Doors and Windows are expertly crafted to provide energy efficiency and help conserve the consumption of fossil fuels for heating and cooling homes. They also boast a long service life and are produced with manufacturing efficiencies designed to reduce waste during production. As a recyclable material, in-plant vinyl scrap can be reused for other products, further lessening the volume and environmental impact of waste.



USGBC and related logo is a trademark owned by the U.S. Green Building Council.



Aside offers a variety of ENERGY STAR[®]-qualified products. Consult your window professional for energy-efficient glass packages available for your home and climate zone.

Contemporary-Style Sliding Patio Door - 3" Rails



Create a fresh and inviting entry to your home with our Promenade Contemporary-Style Sliding Patio Door. The sleek, clean-line design features symmetrical 3" rails for the perfect touch of modern sophistication.

Casual Elegance with Architectural Appeal

This superbly built door will infuse your home with the warmth and beauty of natural sunlight, while protecting it from harsh weather elements.

1. **Premium vinyl mainframe and sash extrusions** are colored throughout – won't chip, peel, crack or warp and never need to be painted.
2. **Mainframe and sash** feature a double-wall design and multi-chambered construction for outstanding strength and thermal protection.
3. **Dual internal/external weatherstripping** on the sash enhances energy efficiency and performance.
4. **Mainframe and 3" sash rails** with mitered and fusion-welded joints provide enhanced aesthetic appeal as well as added strength and durability.
5. **1" thick (nominal) insulated glass unit** with the Intercept Warm-Edge Spacer System promotes energy conservation year-round.
6. **Steel reinforcements** at the interlocks and lock rails increase strength, rigidity and structural integrity.
7. **Contoured glazing bead** adds visual interest and beauty.
8. **Precision-engineered tandem roller system** ensures quiet and easy operation of the door panel.

Plus these additional features:

- Deep interlocks with a protective bulb weatherstrip deliver increased insulation and a tight seal.
- Mainframe includes interior and exterior accessory grooves for installation and design versatility.
- Multi-point locking system with strong steel hook design seals the door tightly closed and helps prevent energy loss.
- Interlock incorporates a built-in, anti-lift feature to impede door panel removal when closed or locked.
- Stainless steel roller track eliminates the possibility of unsightly dark residue and wearing typical of aluminum tracks.
- Heavy-duty extruded aluminum screen features four adjustable rollers for smooth gliding.
- Available in a 2-panel style in 5', 6' and 8' widths; 3-panel styles in 9' and 12' widths; and a 4-panel style in a 12' width with center panels that open to each side.
- Choose a left or right moving panel – left moving panel is standard (outside looking in); not field reversible.
- Backed by a Lifetime Limited Warranty.†

Patio door options:

- ENERGY STAR-qualified ClimaTech insulated glass package options.
- Tandem rollers are available with stainless steel housing and bearings for harsh environments.
- Integrated mini blinds on select patio doors offer convenient sunlight and privacy control.
- Interior ventilation foot lock allows convenient yet limited opening of the door for airflow.
- Keyed exterior lock offers convenient access from outside the home.
- Decorative grid patterns for enhanced beauty.



Available with the following frame options:

- Stucco fin
- 1³/₈" brickmould¹
- 2" brickmould¹
- Nail fin¹

¹Nail fin option is not factory-applied.

Contemporary-Style Patio Door Glass Performance Comparison²

	U-Factor	SHGC
Clear	0.43	0.56
ClimaTech	0.27	0.31
ClimaTech ThermD	0.27	0.31
ClimaTech Elite	0.27	0.20
ClimaTech TG2	0.20	0.26

²6500 whole door values.

Glass Package Terminology:

Clear Insulated: Clear double-pane insulated glass unit.

ClimaTech: Soft coat, multi-layer, vacuum deposition Low-E glass with argon gas and Intercept Warm-Edge Spacer System.

ClimaTech ThermD: Soft coat, multi-layer, vacuum deposition Low-E glass with argon gas and Stainless Steel Intercept Warm-Edge Spacer System.

ClimaTech Elite: Soft coat, SHGC multi-layer, vacuum deposition Low-E glass with argon gas and Intercept Warm-Edge Spacer System.

ClimaTech TG2: Triple-glazed unit with two surfaces of Low-E glass and two air spaces of argon gas with the Intercept Warm-Edge Spacer System.

Classic-Style Sliding Patio Door - 5" Rails



We've given our Promenade Classic-Style Sliding Patio Door an ample measure of traditional beauty but with a tough, high-endurance build. Generous 5" rails convey a familiar sense of home, while design innovations and easy-care features merge perfectly with today's carefree lifestyle.

Time-Honored Beauty with Modern Practicality

Weather protection is just part of the story when it comes to this ultra-premium patio door. You'll also enjoy the smooth and reliable operation, as well as an expanded outdoor view.

1. **Premium vinyl mainframe and sash extrusions** are colored throughout – won't chip, peel, crack or warp and never need to be painted.
2. **Mainframe and sash** feature a double-wall design and multi-chambered construction for outstanding strength and thermal protection.
3. **Dual internal/external weatherstripping** on the sash enhances energy efficiency and performance.
4. **Mainframe and 5" sash rails** with mitered and fusion-welded joints provide traditional beauty as well as added strength and durability.
5. **1" thick (nominal) insulated glass unit** with the Intercept Warm-Edge Spacer System promotes energy conservation year-round.
6. **Steel reinforcements** at the interlocks and lock rails increase strength, rigidity and structural integrity.
7. **Contoured glazing bead** adds visual interest and beauty.
8. **Precision-engineered tandem roller system** ensures quiet and easy operation of the door panel.

Plus these additional features:

- Deep interlocks with a protective bulb weatherstrip deliver increased insulation and a tight seal.
- Mainframe includes interior and exterior accessory grooves for installation and design versatility.
- Multi-point locking system with strong steel hook design seals the door tightly closed and helps prevent energy loss.
- Interlock incorporates a built-in, anti-lift feature to impede door panel removal when closed or locked.
- Stainless steel roller track eliminates the possibility of unsightly dark residue and wearing typical of aluminum tracks.
- Heavy-duty extruded aluminum screen features four adjustable rollers for smooth gliding.
- Available in a 2-panel style in 5', 6' and 8' widths; 3-panel styles in 9' and 12' widths; and a 4-panel style in a 12' width with center panels that open to each side.
- Choose a left or right moving panel – left moving panel is standard (outside looking in); not field reversible.
- Backed by a Lifetime Limited Warranty.†

Patio door options:

- ENERGY STAR-qualified ClimaTech insulated glass package options.
- Tandem rollers are available with stainless steel housing and bearings for harsh environments.
- Integrated mini blinds on select patio doors offer convenient sunlight and privacy control.
- Interior ventilation foot lock allows convenient yet limited opening of the door for airflow.
- Keyed exterior lock offers convenient access from outside the home.
- Decorative grid patterns for enhanced beauty.



Available with the following frame options:

- Stucco fin
- 1³/₈" brickmould¹
- 2" brickmould¹
- Nail fin¹

¹Nail fin option is not factory-applied.

Classic-Style Patio Door Glass Performance Comparison²

	U-Factor	SHGC
Clear	0.41	0.49
ClimaTech	0.27	0.27
ClimaTech ThermD	0.27	0.27
ClimaTech Elite	0.27	0.18
ClimaTech TG2	0.21	0.23

²6500 whole door values.

Glass Package Terminology:

Clear Insulated: Clear double-pane insulated glass unit.

ClimaTech: Soft coat, multi-layer, vacuum deposition Low-E glass with argon gas and Intercept Warm-Edge Spacer System.

ClimaTech ThermD: Soft coat, multi-layer, vacuum deposition Low-E glass with argon gas and Stainless Steel Intercept Warm-Edge Spacer System.

ClimaTech Elite: Soft coat, SHGC multi-layer, vacuum deposition Low-E glass with argon gas and Intercept Warm-Edge Spacer System.

ClimaTech TG2: Triple-glazed unit with two surfaces of Low-E glass and two air spaces of argon gas with the Intercept Warm-Edge Spacer System.

French-Style Sliding Patio Door



Traditional French-style doors are a popular choice but require a considerable amount of space to operate. Our Promenade French-Style Sliding Patio Door captures the same authentic “French door” elegance but in a floor space-saving design.

Authentic French Door Character and Charm

With a 5" top rail, 7" bottom rail and 3" side rails, this eye-catching patio door imparts true French-door character but with the convenience of a sliding door. Ultra-efficient insulating glass and a weathertight design further enhance its outstanding construction.

1. **Premium vinyl mainframe and sash extrusions** are colored throughout – won't chip, peel, crack or warp and never need to be painted.
2. **Mainframe and sash** feature a double-wall design and multi-chambered construction for outstanding strength and thermal protection.
3. **Dual internal/external weatherstripping** on the sash enhances energy efficiency and performance.
4. **5" top rail, 7" bottom rail and 3" side rails** feature mortised joints for added strength and authentic "French door" charm.
5. **1" thick (nominal) insulated glass unit** with the Intercept Warm-Edge Spacer System promotes energy conservation year-round.
6. **Steel reinforcements** at the interlocks and lock rails increase strength, rigidity and structural integrity.
7. **Contoured glazing bead** adds visual interest and beauty.
8. **Precision-engineered tandem roller system** ensures quiet and easy operation of the door panel.
9. **Fusion-welded mainframe** provides increased durability and strength.

Plus these additional features:

- Deep interlocks with a protective bulb weatherstrip deliver increased insulation and a tight seal.
- Mainframe includes interior and exterior accessory grooves for installation and design versatility.
- Multi-point locking system with strong steel hook design seals the door tightly closed and helps prevent energy loss.
- Interlock incorporates a built-in, anti-lift feature to impede door panel removal when closed or locked.
- Stainless steel roller track eliminates the possibility of unsightly dark residue and wearing typical of aluminum tracks.
- Heavy-duty extruded aluminum screen features four adjustable rollers for smooth gliding.
- Available in a 2-panel style in 5', 6' and 8' widths; 3-panel styles in 9' and 12' widths; and a 4-panel style in a 12' width with center panels that open to each side.
- Choose a left or right moving panel – left moving panel is standard (outside looking in); not field reversible.
- Backed by a Lifetime Limited Warranty.¥

Patio door options:

- ENERGY STAR-qualified ClimaTech insulated glass package options.
- Tandem rollers are available with stainless steel housing and bearings for harsh environments.
- Integrated mini blinds on select patio doors offer convenient sunlight and privacy control.
- Interior ventilation foot lock allows convenient yet limited opening of the door for airflow.
- Keyed exterior lock offers convenient access from outside the home.
- Decorative grid patterns for enhanced beauty.



¹Nail fin option is not factory-applied.

French-Style Patio Door Glass Performance Comparison²

	U-Factor	SHGC
Clear	0.42	0.52
ClimaTech	0.27	0.28
ClimaTech ThermD	0.27	0.28
ClimaTech Elite	0.27	0.19
ClimaTech TG2	0.21	0.24

²6500 whole door values.

Glass Package Terminology:

Clear Insulated: Clear double-pane insulated glass unit.

ClimaTech: Soft coat, multi-layer, vacuum deposition Low-E glass with argon gas and Intercept Warm-Edge Spacer System.

ClimaTech ThermD: Soft coat, multi-layer, vacuum deposition Low-E glass with argon gas and Stainless Steel Intercept Warm-Edge Spacer System.

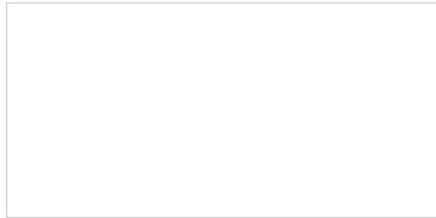
ClimaTech Elite: Soft coat, SHGC multi-layer, vacuum deposition Low-E glass with argon gas and Intercept Warm-Edge Spacer System.

ClimaTech TG2: Triple-glazed unit with two surfaces of Low-E glass and two air spaces of argon gas with the Intercept Warm-Edge Spacer System.

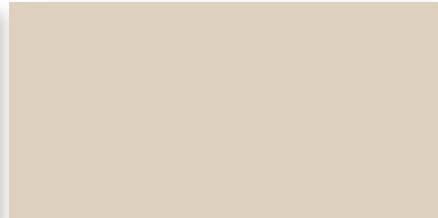
Frame Finishes and Handles

Color Collection

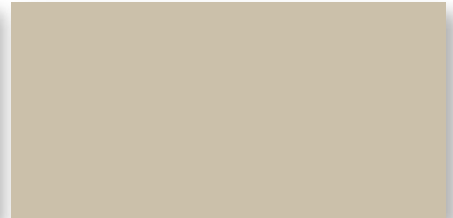
Our carefully selected color palette lets you create the ideal patio door – one that beautifully complements the architectural style of your home as well as the interior décor.



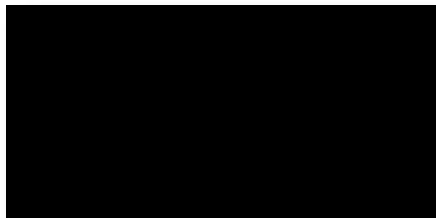
*White*³



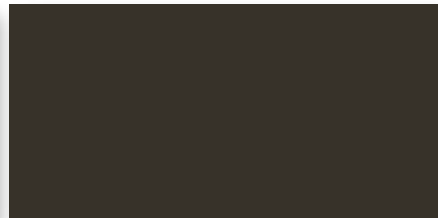
*Almond*³



*Desert Clay*³



*Black*⁴



*Architectural Bronze*⁴



*Silver*⁴

Elegant Handle Styles

Our Contemporary-Style and Classic-Style Sliding Patio Doors feature a popular handle design with a thumb latch for universal appeal.



White

Almond

Desert Clay

*Bright
Brass*

*Bright
Chrome*

*Antique
Brass*

*Brushed
Chrome*

The gracefully contoured handle on our French-Style Sliding Patio Door includes a top lock for added resistance.



White

Almond

Desert Clay

*Bright
Brass*

*Bright
Chrome*

*Antique
Brass*

*Brushed
Chrome*

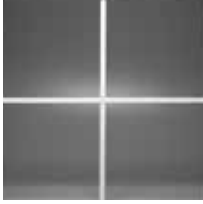
³ Solid extruded color. Note: Desert Clay is not available with exterior color finishes.

⁴ Available with a White or Almond interior only.

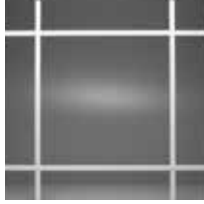
Decorative Grids

Interior Grids

It's simple to turn your patio door into a statement of style with our decorative interior grids. All grids are enclosed within the insulated glass unit for easy cleaning.



*5/8" Standard
Colonial*



*5/8" Standard
Prairie*



*3/4" Contoured
Colonial*



*3/4" Contoured
Prairie*



*1" Contoured
Colonial*



*1" Contoured
Prairie*



Configurations



Promenade Sliding Patio Doors are available in 2-, 3- and 4-panel configurations.

Proven Quality

Experience you can trust.

When you buy a Promenade Sliding Patio Door, you know you're getting more than just a frame, sashes and glass. You're getting the knowledge and technical skill of Alside's Product Development Group – experts with a proven track record of designing, building and testing superior, energy-efficient patio doors and windows. These specialists know that to build the best products, you have to start with the best materials and components. Their experience is your assurance of total satisfaction.



Single-Hung Windows



Double-Hung Windows



The Alside Lifetime Limited Warranty.

Promenade Sliding Patio Doors are made by Alside, a recognized leader in product innovation, manufacturing excellence and uncompromising quality control. That's a reputation you can count on,

from the day your patio door is installed until the day you sell your home. And to make your buying decision easier, Alside backs all Promenade Sliding Patio Doors with its Lifetime Limited Warranty^Y... one of the strongest in the industry.



Sliding Windows



Awning Windows



For a complete list of air, water and structural performance results, as well as specific code approvals, visit www.alsidewindows.net.



Casement Windows



Picture Windows

Window products for every architectural need.

For a variety of looks from traditional to contemporary, no matter what the application is, Alside Window Systems has you covered. Choose from a complete product line that offers Single-Hung, Double-Hung, Sliding, Casement, Awning, Picture and Specialty Shape Windows. You'll find that the combination of many styles and configurations will work well to enhance your home's appearance.



Alside 3773 State Road Cuyahoga Falls, Ohio 44223
1-800-922-6009 www.alside.com



CUSTOM-CRAFTED IN
AMERICA



Please recycle